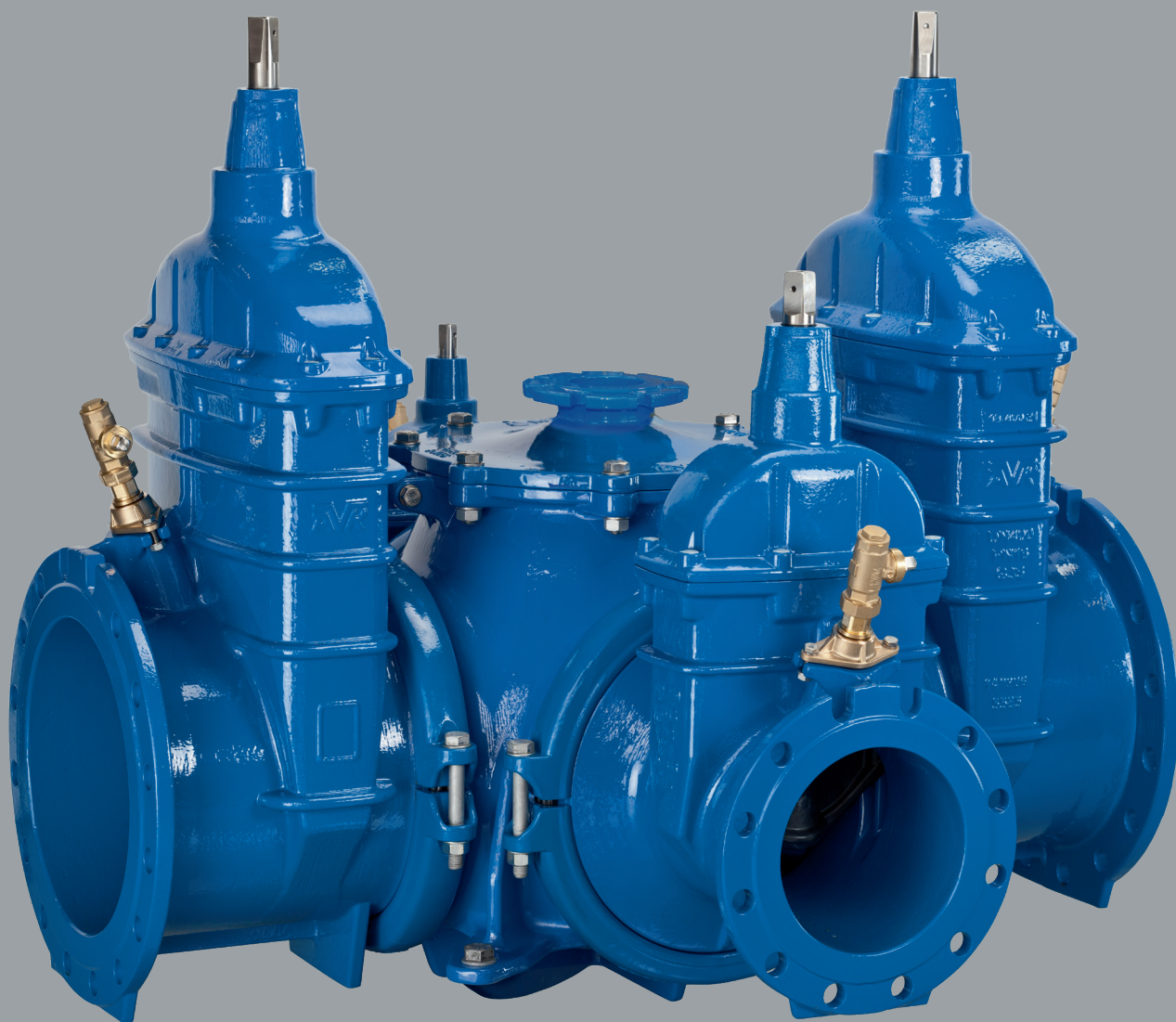


AVK FLEXIBLE COMBI-CROSS



**FLEXIBLE
COMBI-CROSS**

Expect... **AVR**

GREAT FLEXIBILITY IN INSTALLATION AND POTENTIAL RETROFIT OF VALVES

Unique flexible design

The flexible combi-cross offers maximum flexibility as the centre part can be mounted with 3 or 4 valves of different sizes, or with a blind cap for later installation of a valve, on any of the four outlets. Often only two of the valve outlets are needed in full DN size, whereas the other valve outlets are to be connected to pipes of smaller dimensions.

With the flexible combi-cross, it is not necessary to use reduction flanges or transition flanges to reduce one or more of the outlets to the appropriate size. This reduces the number of bolted connections and saves time and money. Regardless of the valve size mounted, the face-to-face length of the combi-cross remains unchanged.

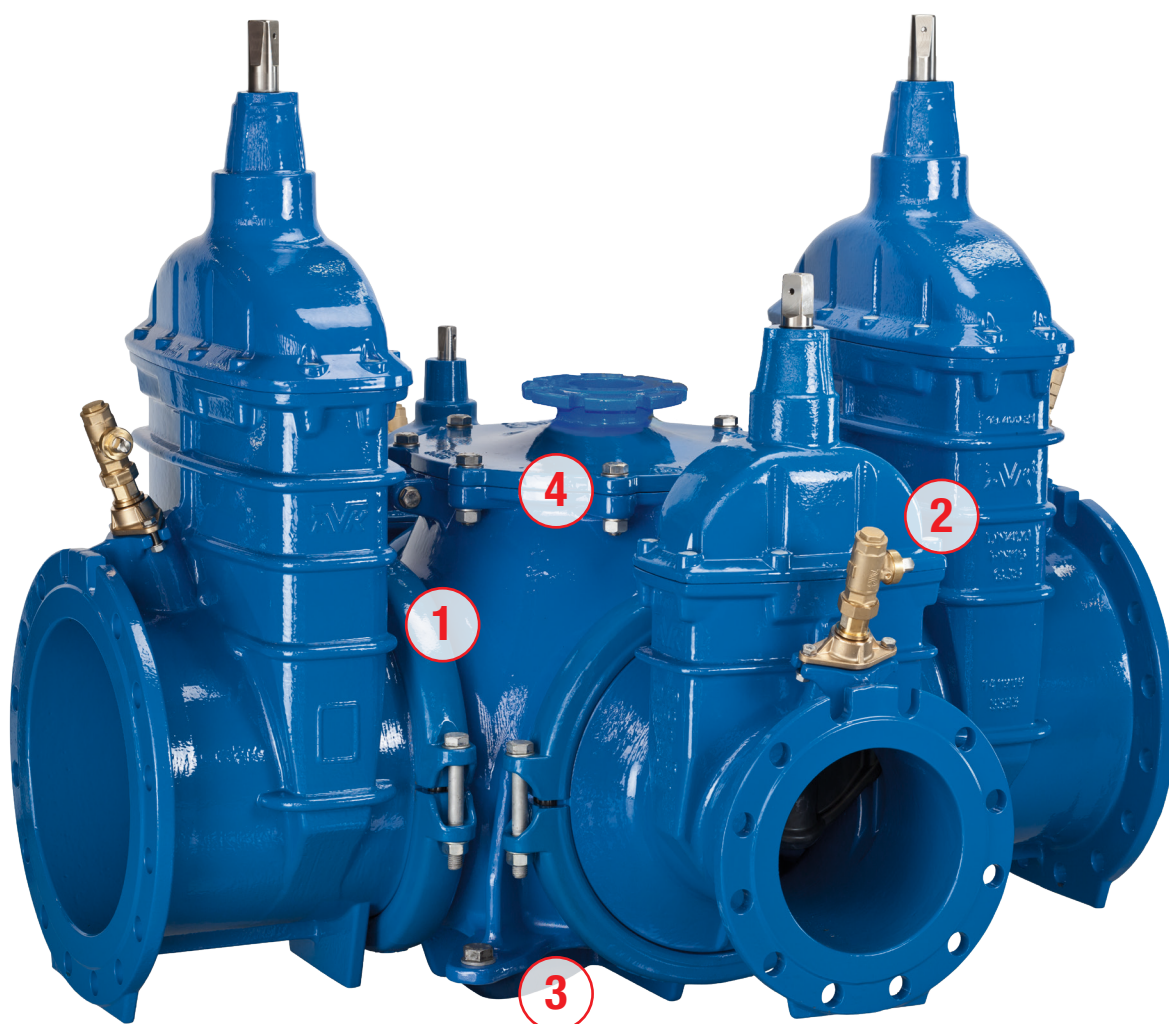
If needed, the valves can easily be replaced with valves in other dimensions, as the design enables vertical replacement without the use of special tools.

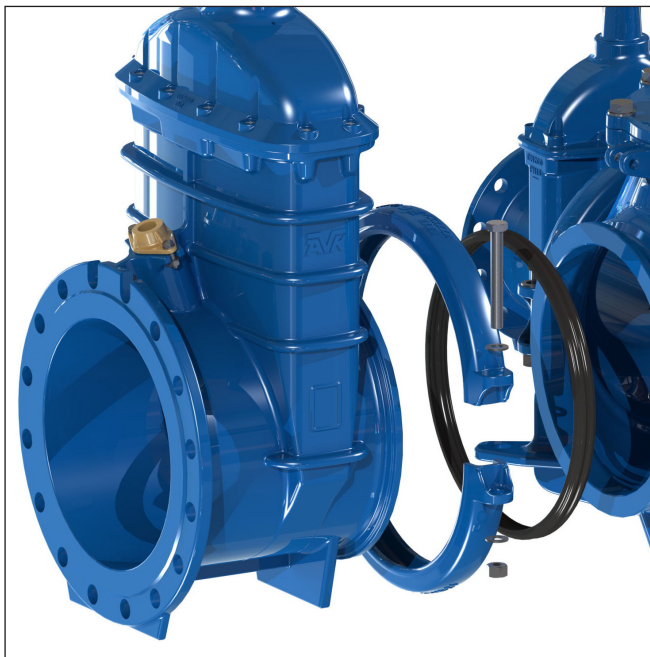
The combi-cross is anchored in the chamber by means of fixation lugs on the centre part. Therefore, replacement of valves will not affect the anchoring of the combi-cross, and maximum safety during a retrofit is ensured.

All valves and blind caps can be mounted with ball valve service outlets, making it possible to take out water samples or to supply auxiliary water.

Feature summary

- Flexible design - no need for reduction or transition flanges
- Easy replacement of valves
- Safe anchoring of centre part
- Full bore centre outlet allows for pipe cleaning
- Renowned AVK gate valve design
- Service valve outlet points with optimum corrosion protection
- Combi-cross also available in DN400





1. Valve and centre part connection

Valves are connected to the centre part with a two-part ductile iron bracket based on a coupling design similar to the renowned Victaulic design. A profiled gasket of EPDM seals the connection. The design enables vertical replacement of the valves without the use of special tools. To ease installation, a guide hinge is cast on the valve side.



2. Service connection outlets

All valves are equipped with a bolt-on service valve outlet point. The unique AVK design provides optimal corrosion protection as there are no uncoated threads exposed to the environment.



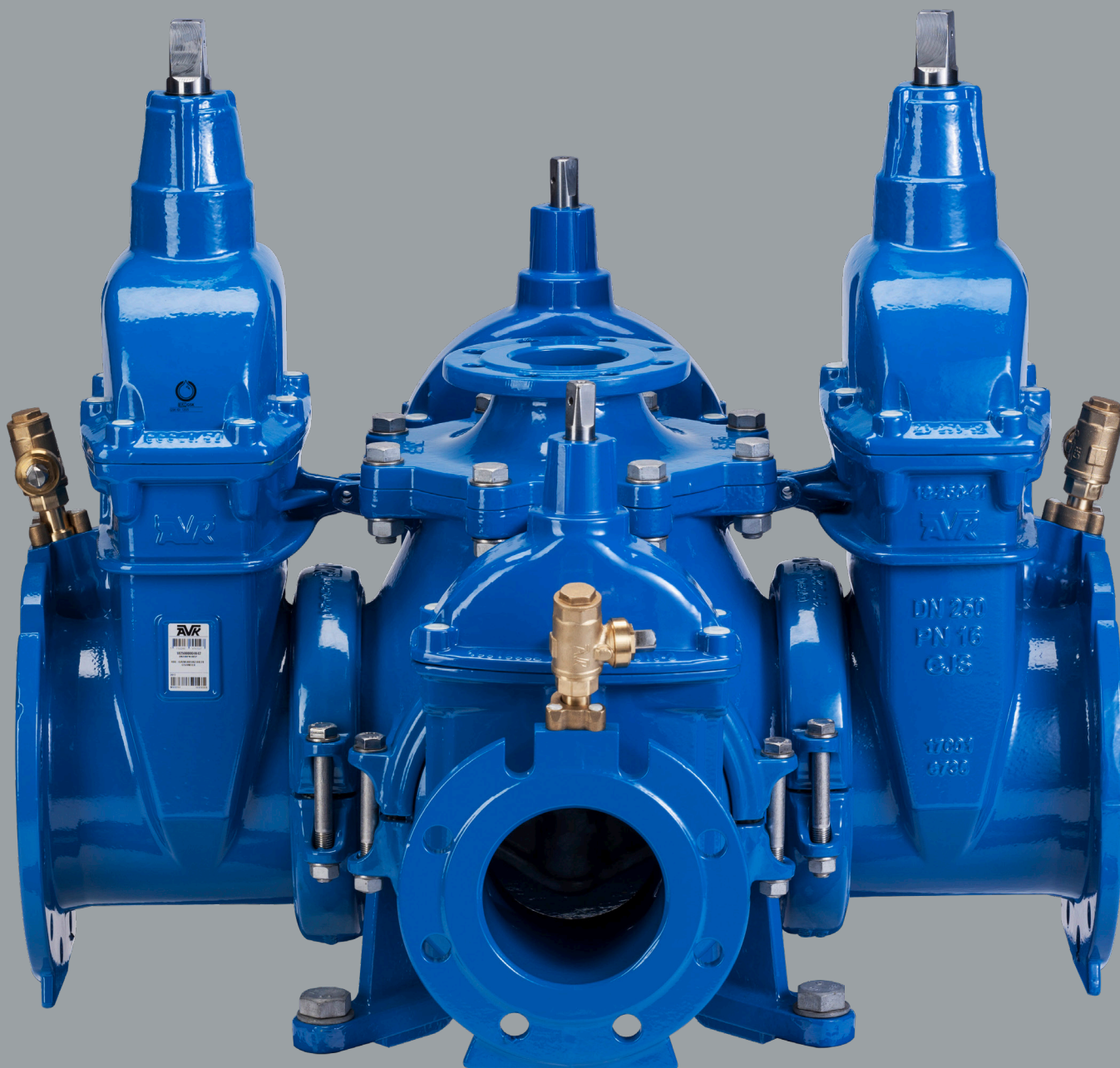
3. Safe anchoring

The AVK combi-cross is designed to meet stringent safety requirements. Even when valves are disconnected and removed from the centre part, the anchoring remains unaffected. This provides maximum safety for the staff working in the concrete chamber, since the forces from pressure and pipe movement are directed through the fixating lugs and into the standard concrete foundation.



4. Full bore centre outlet

The full bore centre outlet allows for insertion of solid foam pipe cleaning devices, and the DN100 flange outlet can be used for mounting a hydrant or as inspection access point to the water stream. The centre outlet lid is mounted with standard bolts and nuts thus avoiding threads directly in the casting. An O-ring placed in a recess provides optimal tightness between the centre part and the lid.



AVK INTERNATIONAL A/S

Bizonvej 1
8464 Galten
Denmark

Tel: +45 87 54 21 00
sales@avk.dk
www.avkvalves.eu

2018-01-04
Copyright©AVK Group A/S 2018

Expect... **AVK**

